

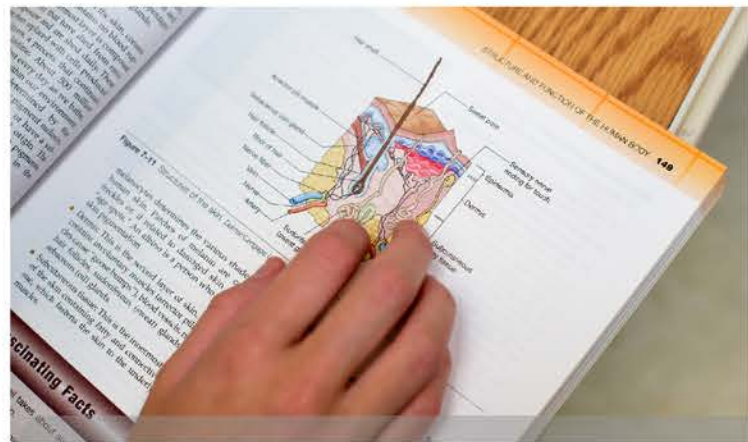
IS A PERSONALIZED PATHWAY RIGHT FOR YOU?

A PATHWAY MAY BE A GOOD FIT FOR YOU IF YOU WISH TO:

- ✓ link your learning to life
- ✓ learn and apply skills in authentic learning experiences
- ✓ personalize your education
- ✓ explore interests and learn about possible careers and postsecondary options to better make decisions about your future

“I WISH HIGH SCHOOL COULD BE BASED ON SKILLS RATHER THAN ON CONTENT. I WISH HIGH SCHOOL FOCUSED MORE ON SKILLS THAT YOU NEED LATER ON IN LIFE AND LESS ON CONTENT. YOU COULD TAKE A SKILLS-BASED CLASS THAT ALSO INFUSES CONTENT.”

— MMSD High School Student,
James Madison Memorial Focus Group



WHY PERSONALIZED PATHWAYS:

Academic and career planning + Rigorous curriculum + Authentic experiences + Smaller learning communities = High school graduates who are ready for college, career and community

When students are in programs that connect core academics with an interest area, they develop transferable skills that prepare them for success after high school.

When students use what they are learning to solve authentic problems, they succeed by thinking critically and creatively, communicating their ideas effectively and working collaboratively.

When students engage in experiential learning, interacting with community, postsecondary and industry partners, they gain self-confidence and are able to manage their own work and behaviors productively.

When students actively engage with the larger community, they become effective at using the strategies needed to manage their own educational and career development over time and to participate fully in civic life.

Personalized Pathways connect strong academics with authentic experiences. This approach focuses on helping all students perform at higher levels and preparing them for college, career and community success.



The Personalized Pathways approach is based on decades of research and promising education practices. It responds to the need to:

- Keep all students engaged in learning and motivated to succeed
- Create a more personalized and coherent educational program
- Be guided by state and national standards without being limited by narrow state and federal accountability requirements and outcomes
- Extend learning beyond the classroom
- Engage adults throughout the community in the education of our youth
- Focus on both equity and excellence without letting one compromise the other
- Align today's education with tomorrow's opportunities



MADISON METROPOLITAN SCHOOL DISTRICT

mmsd.org/personalized-pathways



MADISON METROPOLITAN SCHOOL DISTRICT



EXPLORE YOUR PASSIONS

Pathways help make learning relevant.

Personalized Pathways are sequences of rigorous interconnected courses and experiences, both within and outside of school, driven by students and their academic and career plans.



DISCOVER POSSIBILITIES

Explore a broad range of college, career and community possibilities within a variety of industry and business sectors. Graduate with a postsecondary plan that leads to an industry-recognized certificate, license or associate or baccalaureate degree.



HOW IT WORKS:

SMALL LEARNING COMMUNITIES

Students, teachers and Student Services staff will be organized into smaller learning communities, designed to create a family-like structure that helps staff get to know each student's strengths, interests and hopes.

ACADEMIC AND CAREER PLANNING

Students in grades 6-12 will collaborate with their families, staff and community members to chart, assess and refine their pathway to postsecondary success by exploring who they are and what they want to do, while making progress toward these goals.

TIMELINE:

By tapping into students' interests, Personalized Pathways will increase the relevancy of the high school experience for all students and better prepare them for college, career and community.



EXPERIENTIAL LEARNING OPPORTUNITIES

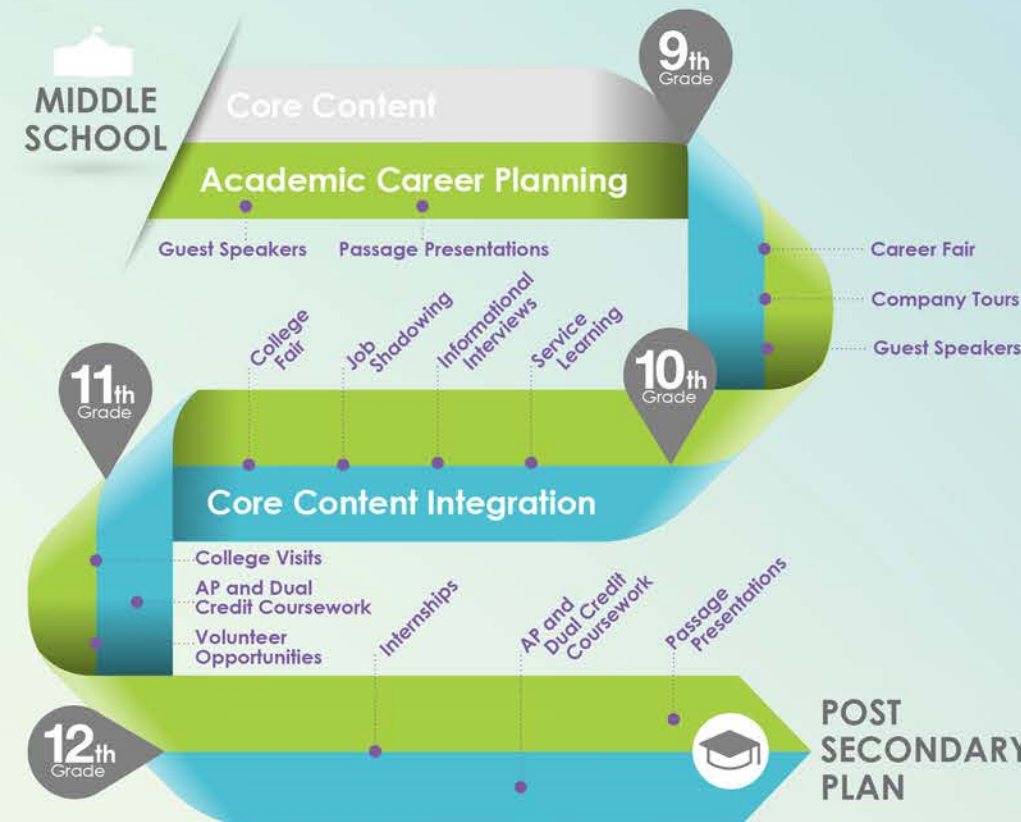
Business, industry, postsecondary institutions and community-based organizations will partner with students and schools through experiential and work-based learning opportunities where students will authentically practice their knowledge and skills both inside and outside the classroom walls.

PROGRAMS OF STUDY

Rigorous and linked academic and technical courses and experiences, personalized for each student, will sequence and build toward graduation and beyond.

PERSONALIZED STUDENT SUPPORTS

Personalized supports will provide all students with services tailored to their needs. These may include counseling, services for English Language Learners, Special Education, Advanced Learning, mental health services and more.



Academic Career Planning

Throughout middle and high school, students participate in experiential learning opportunities and postsecondary and career planning and share their learning, growth and next steps with families, community members and teachers.

Core Content Integration

Personalized Pathways integrate educational themes throughout high school in math, English, science, social studies and technical subjects. Integrated projects help to solidify students' content knowledge and 21st century skills.

Experiential Learning Opportunities

Authentic opportunities and experiences help prepare students for college, career and community. These include field trips, college visits, guest speakers, service learning and more.

MAKING LEARNING MORE MEANINGFUL TO YOU

Pathways aim to deeply engage students in learning, give them a greater sense of competence and achievement, help them make smart decisions about their future and **better prepare students for college, career and community.**